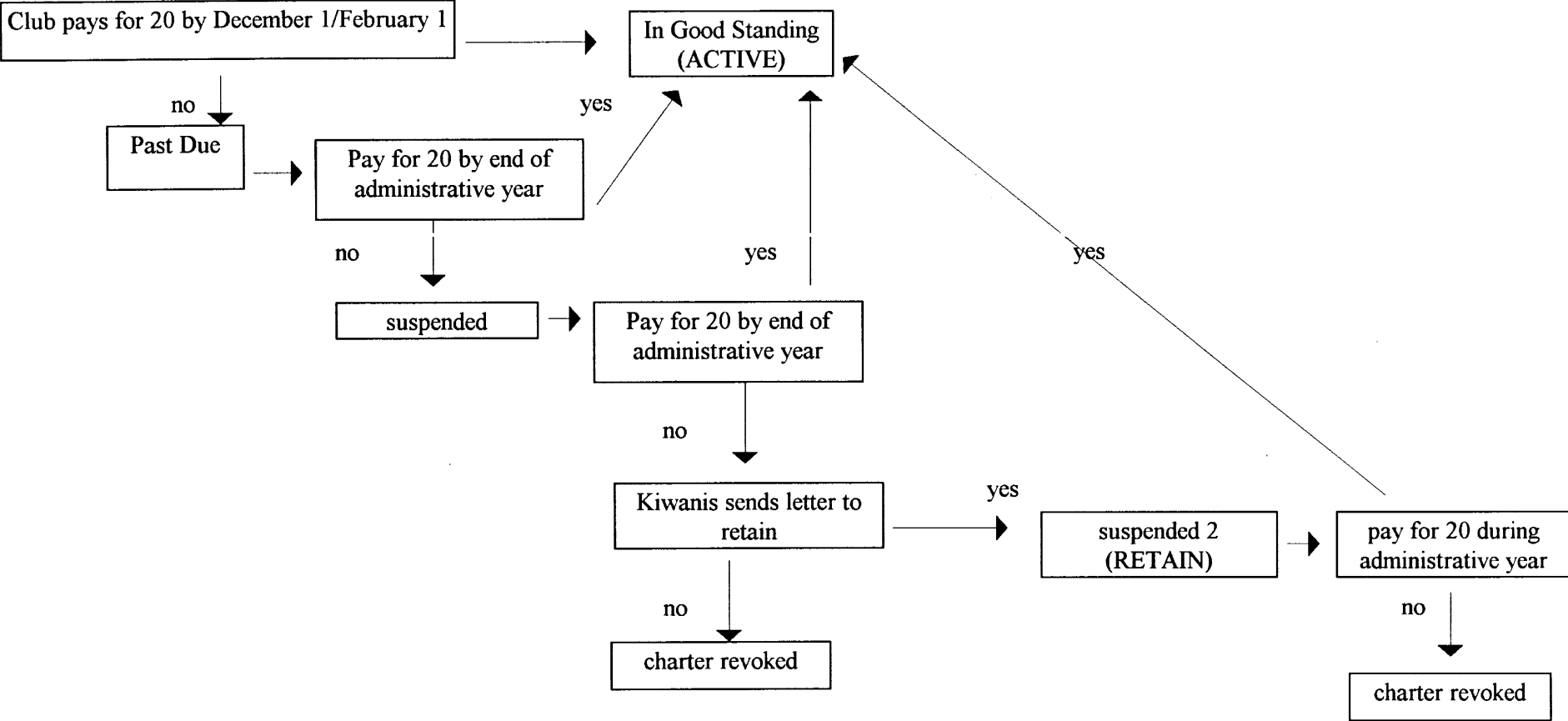


Status Changes as of October 1, 1998



Example

1998-99 Good standing
 If dues are not paid for 20 members by December 1/February 1—Past Due
 1999-2000 Suspended
 If dues are not paid for 20 members
 2000-01 Suspended 2 (Retained)
 Only if Kiwanis club writes a letter to retain club
 If no letter is written, charter is then revoked